

INSIDE THIS ISSUE

**WASHING
MACHINES
NEED
CLEANING TOO**
PAGE 2

**MANAGE BACK-
TO-SCHOOL
ENERGY SURGE**
PAGE 3

**CLASSIFIED
ADS**
PAGE 4

CANADIAN VALLEY ELECTRICAL CO-OP

Members to Enjoy Co-op Business, Fun, and Prizes at 80th Annual Meeting



August 3 is a big day for CVEC and its members. This year CVEC is celebrating its 80th Annual Meeting!

The meeting will again be held at Firelake Arena in Shawnee. Registration begins at 9:30 a.m. and closes promptly at 11 a.m., when the meeting will commence.

This year members were mailed an individual official Annual Meeting notice with cooperative information and a registration card printed on the back. Members are asked to bring the perforated card or the entire booklet with them to the meeting for registration. If you have misplaced yours, we will have one there for you to

fill out.

Attendees will receive a \$20 meal certificate, a \$15 member credit, and the always popular co-op cap at registration. They will also be eligible for multiple prizes including a \$500 prize per district, a \$1,500 credit to their electric bill, a Stihl MS 170 chain saw, a RTIC 110 ice chest, and a cash prize courtesy of BancFirst of Prague.

Grand Prizes this year are a Polaris Sportsman 450 ATV, and a John Deere Z535M 48" ZTrak mower.

Prize drawings will occur at the conclusion of the business session and members must be present to win.

P.O. Box 751 Seminole, OK 74818

Serving Hughes, Lincoln, McIntosh, Okfuskee, Pottawatomie, Seminole & portions of Oklahoma, Cleveland & Creek counties

Main Office and Headquarters

Interstate 40 at the Prague/Seminole Exit

Area Office - 35 W. JC Watts Street, Eufaula

Office Hours - 8 a.m. to 5 p.m., Monday - Friday

Board of Trustees

President - Joe Semtner, Konawa District 6
 Vice Pres. - Robert Schoenecke, Meeker District 2
 Sec.-Treas. - Matt Goodson, Tecumseh District 5
 Asst. Sec.-Treas. - Steve Marak, Meeker District 1
 Gary Crain, Prague District 3
 Clayton Eads, Shawnee District 4
 J.P. Duvall, Seminole District 7
 Yates Adcock, Dustin District 8
 J. Roger Henson Attorney

Telephone Numbers	Seminole.....(405) 382-3680
	Shawnee.....(405) 273-4680
	Eufaula(918) 689-3232
	Prague(405) 567-3206
	Toll-free.....(877) 382-3680

IN CASE OF TROUBLE

1. Check for blown fuse or tripped circuit breakers.
2. Check with your neighbors. Ask if their electricity is off and if they have reported it.
3. If not, call the office or download the Smarthub app to report the trouble.

	Read	Billing date	
Cycle 1	26th-31st	5th	1-1/2% penalty
Cycle 2	6th-11th	15th	applied 20 days
Cycle 3	16th-21st	25th	after billing date

Operating Statistics for May

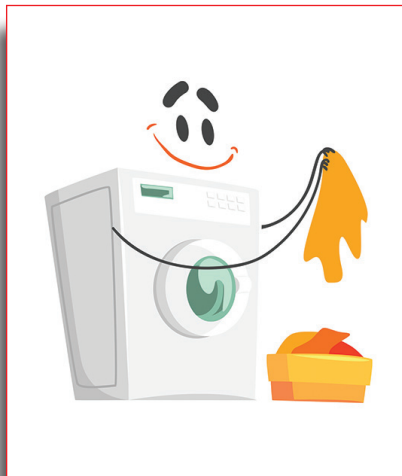
	2018	2019
Operating Revenues	\$4,934,818	\$5,074,678
Wholesale Cost of Power	\$3,339,357	\$3,478,996
Percentage WPC is of Revenue	67.67	68.56
Consumers per Mile of Line	4.75	4.78
Revenue per Mile of Line	\$940.86	\$967.16
KW Peak Demand - This month	143,521	126,359
Billing kW demand	103,927	10,429
KW Peak Demand - YTD	182,438	171,445
KWh Purchased - This month	60,244,477	58,549,197
Taxes Paid	\$93,152	\$94,842
Interest on Long Term Debt	\$173,080	\$182,271
System Load Factor	56.4	62.3

New Services Staked in June

During the month of June, 45 new services were staked. The total new services staked in 2019 is 205. This compares to 192 for the same period in 2018.

Your Washing Machine Needs Cleaning Too

You'd think that a machine designed to keep your clothes fresh and clean would clean itself. But washing machines need to be cleaned at least once a year.



Think of the dirt, grease and grime that your washer handles on a near-daily basis. They power the worst out of diapers, grass-stained denim, food-stained cotton and more. Your clothes emerge

spotless, but they leave some of that gunk behind. Laundry detergents can build up in the tub, pump and hoses. That build-up can make your washing machine less efficient and also can harm your clothes.

So clean it out. Here's how:

- Fill your empty washing machine tub with hot water. Pour 916140102 in three cups of vinegar and half a cup of baking soda.
- Remove the fabric softener receptacle and bleach dispenser and soak them in hot, soapy water. Nudge stubborn dirt and stains with a Q-tip.
- Sponge off the agitator and all the of tub's surfaces.
- Use vinegar and a washcloth to wipe down the machine's exterior surfaces.
- Check your washer's hoses for weak spots or leaks. You may need to replace your hoses every five years or so.

OPERATION ROUND-UP

FINANCIAL STATEMENT

BEGINNING BALANCE 5/31/19	\$222,444.38
DEPOSITS	8,345.78
INTEREST INCOME	301.07
CHECKS ISSUED	-30,231.80
APPROVED, NOT YET PAID	-14,264.39
BALANCE 6/30/19	\$186,595.04

CVEC Foundation administers and disburses funds collected through CVEC's Operation Round-Up Program.

FOLLOW THESE TIPS TO MANAGE BACK-TO-SCHOOL ENERGY SURGE

Even though the kids will be out of the house during the day once school starts, you could see a bump in your energy bills.

As the school year begins, busy students will be using the family computer more to write papers and complete school assignments. Shorter days mean more lights go on in the evening to do homework. If everyone's up before the sun, lights go on earlier.

Manage the extra energy use. Here are some tips to conserve energy as your kids head back to school:

- Teach your children how to put the computer into sleep mode when they are finished using it, even

if they plan on returning later. Electronics in sleep mode use about 80 percent less electricity than when operating at full power.

- In the market for new computer equipment this year? Computers with an Energy Star rating use 70 percent less electricity overall, while monitors bearing the label draw 90 percent less.

- Desk lamps and other concentrated task lighting create a productive work environment without wasting excess light. If yours are older, replace their halogen or incandescent desk lamps with LED bulbs, which fit most fixtures and produce less heat while using less electricity.

- Bicycling or walk-



ing to school two days a week can save gas and give kids much-needed exercise now that summer days of play are over. If the commute is too far, organize a carpool with parents in your neighborhood to earn yourself a couple of mornings off.

- Do a thorough inventory of school supplies before heading to

the store to reduce waste. Supplies often come in bulk packages that won't run out before the end of the school years.

- Buy reusable sandwich bags and use lunchboxes instead of brown bags to save money and reduce everyday packaging waste.

Want to Know Where You can Pay Your Electric Bill?

Visit our Website - www.mycvec.coop - for a list of convenient locations.

Find Your Account Number & WIN \$25

If you find your account number hidden in this issue of The ElectraLite, you could win \$25. The account number must be your own.

You need to report finding the number to us by the 15th of the month.

And you need to report finding it by phone, mail or in person.

AUTOMOBILES & BIKES

2017 Ford truck Explorer utility 4WD, V6, comes with bumper-to-bumper warranty, Blue Jeans Metallic exterior, tan interior, 52,300 miles, excellent condition and clean title, \$21,575, Shawnee, 405-589-0951.

1976 Chevy Laguna S-3 'project car', have new parts and good used parts, \$1,400 OBO, 405-598-0216.

FARM & RANCH

Approximately 600 feet of 2 3/8" steel pipe tubing in 31' joints, good for corrals, fence posts, etc., \$1/foot, price negotiable if you take all, you load and haul, 405-997-8161, Tecumseh, 405-615-2616.

Two-bottom plow, \$100; single section harrow \$50; 6' box blade with rippers, \$350, 405-659-5047.

Registered Hereford bulls, muscular, polled, gentle, low birth weights, out of highly productive cows, 12- to 22- mos. old, \$1,600-\$2,200, 405-598-1920 or 405-210-8794.

HOME & LAND

Rustic log home, lake house or hunting cabin, 3 BDR, 1 BA, central heat and air, open floor plan, to be moved, better than a kit, extra 20'x20' room, high ceiling, was once a game room, make offer, 405-598-1202.

MISCELLANEOUS

Whirlpool washer and dryer, \$200; gas stove, \$100; ice box, \$100; 110 AC, 10,000 BTU, \$100; gas, front-loader dryer, \$150, 405-275-3419.

Classic Italian-manufactured stone, approx. 175 sq. ft., colors: tan, light gray, dark gray, autumn bronze, red, brown, and dark brown; original paperwork, pictures of it installed available, is on three pallets, must pick up in Shawnee, \$450, 405-214-8638.

Flambeau model 1813 tackle box full of Sea fishing tackle, \$50; metal minnow bucket, \$20; Radio Flyer wagon with side boards; small disc for deer lease, \$50; antique baby weighing scales has wicker basket, \$50, 405-659-5047.

Collectible bicycles - 1948 Schwinn, \$85; girl's auto-bike, \$75; 3 1050s retro-style bicycles, \$65 each, 580-925-3978.

Exercise bike, \$75; portable saw, \$40; Kwikset entry deadbolt locks \$15 new, several used circular saws, 405-598-5286.

GC girls 3-sp. Schwinn bike, \$40; concrete bird bath, \$20; misc. furniture pieces; 3 dog crates, \$5, \$10 and \$15; two free mixed breed puppies, 405-371-3133.

Pressure cooker with cookbook, \$20, 405-997-5647.

2006 30' Gulf Stream bumper-pull RV, everything works, \$6,500, 405-567-4359, 405-567-7462..

Two lots in Resthaven Cemetery, Lot 4-C, spaces 1 and 2, Eternity Garden, Shawnee, 405-323-2931.

Cabbage Patch Kids dolls, several at \$4-\$10 each, all are clean and fully dressed, some in original CPK clothes, some in handmade clothes, some in original boxes, E-mail jsing_2001 for pictures, 405-615-2616.

Cedar tree clearing, \$85/hr.; brush mowing, \$40/hr.; hay hauling, \$4/bale; dirt work/driveways, \$75/hr., other services available, 405-642-9356.

ELECTRALITE CLASSIFIED ADS

- Each CVEC member family is limited to ONE free classified ad per month.
- Length of the ad cannot exceed space provided below. Ads run only one time
- and must be resubmitted to appear in the next edition. **Return the completed form to P. O. Box 751, Seminole, OK 74818. Forms may also be dropped off at either office location, or email your ad to editor@mycvec.coop.**
- **Ads must be received by the 5th of each month; if received after the deadline they will be printed in the next issue.**

.....

.....

.....

.....

.....

.....

.....

.....

.....

.....

All information below must be completed.

Name

Address

Account #

Phone #

